

GES-BIMIT

Motherboard

Haswell-U or Broadwell-U Celeron, Pentium
I5-4030U, I5-4300U, I5-5200U

Features

- Intel® Alder Lake, Raptor Lake, -U/P i3/i5/i7 Series Processors
- Support Up to 96GB 2*SO-DIMM, Dual Channel 3200MHz DDR4
- Supports VGA or DP, LVDS or eDP, eDP2, HDMI or Dual HDMI
- Enabling Quad Display in Sync or Async Modes
- 2x Intel I226 Gigabit Ethernet Interfaces
- 1x M.2 Key-M Support NVME or SATA SSD
- 1x M.2 Key-E (WIFI/BT) and 1x M.2 Key-B (4G/5G)
- 8x USB Interfaces
- 6x Built-in RS232, 4x RS485

Appearance



GES-BIMIT

Motherboard

Intel® Alder Lake, Raptor Lake

I5-1235U, I7-1265U, I5-1240P, I5-12450H, I5-1340P, I5-1335U

Revision Table

Date	Revision	Content	By
2024/10/22	0.1	Mother Board Datasheet	Leon

GES-BIMIT

Motherboard

Intel® Alder Lake, Raptor Lake

I5-1235U, I7-1265U, I5-1240P, I5-12450H, I5-1340P, I5-1335U

Specification

Motherboard	
CPU	Intel® Alder Lake, Raptor Lake, -U/P i3/i5/i7 Series Processors
Memory	2x SO-DIMM, Dual Channel 3200MHz DDR4 Maximum 96 GB
Graphics	Intel® Iris® Xe Graphics Eligible, Support DirectX12.1,OpenGL4.6, 4K Display
Display	1x HDMI 2.1 (4096x2160@60Hz) 1x VGA (1920x1080@60Hz), Optional DP(4096x2160@60Hz) 1x LVDS, Optional EDP1 1x EDP2
Ethernet	2x Intel I226 2.5 Gigabit NICs, Support Wake-On-LAN/PXE
Storage	1x SATA3.0 1x M.2 Key-M 2280/2242 PCIE4.0 X4 slot
Audio	ALC897 6-Channel High-Fidelity Audio Controller Support MIC/Line-Out/Amplifier(2ohms 5W)
Expansion Slot	1x M.2 Key-B Slot, Supports 5G (3052) and is Compatible with 4G (3042) 1x M.2 Key-E Slot, Supports WIFI /BT and CNV12 Protocol WIFI 6 Modules
Back Panel I/O	1x HDMI 2.1 (Optional Dual HDMI) 1x VGA(Optional DP) 4x USB3.0 (USB3 and LAN2 are Alternate Options, Dual LAN Supports Only 2 USB 3.0 Ports) 2x RJ-45 Gigabit Network Interfaces (Either LAN2 or 2x USB 3.0) 1x Clear CMOS Button Switch (Default Not Installed, Can Be Configured as a One-Touch Reset Button) 1x DIP Switch for Power-On Via Call (Default Not Installed) 1x Line Out Port (Green), 1 x MIC Port (Red) 1x 12~19V DC Power Input Port

GES-BIMIT

Motherboard

Intel® Alder Lake, Raptor Lake

I5-1235U, I7-1265U, I5-1240P, I5-12450H, I5-1340P, I5-1335U

Internal I/O	1x EDP2 Interface 2* 15 Pin 1x LVDS Interface 2* 15 Pin (Alternative to EDP1, Optional) 1x Backlight Power Supply Interface 1* 6 Pin 4x USB 2.0 Header 2* 5 Pin (Note 1:) 1x Front Audio Header 2* 5 Pin, Supports Line-Out and MIC In 1x Amplifier Interface 1* 4 Pin (White Connector, Located Near Audio Interfaces) 6x COM Leader Interfaces (Note 2:) 1x ATX Power Connector 2* 2 Pin 1x HDD Power Connector (Red Connector) 1 x LPT Printer Interface 1x Front Panel Switch and LED Connector 2* 5 Pin
Fan Connector	1* 4 Pin CPU Fan Connector, 1* 4 Pin System Fan Connector
GPIO	Supports 4 GPIO Inputs/Outputs
TPM	Supports External TPM 2.0 Header 2* 6 Pin (Optional Onboard TPM 2.0 Support)
BIOS	64Mb Flash ROM
Watchdog	Supports Hardware Reset Function (256 Levels, 0~255 Seconds)
Support OS	Windows 10/11, Linux
Power Supply	Supports DC 12~19V

Note 1: Maximum Up to 8 USB 2.0 Ports (Default Single LAN Supports 5x USB 2.0 Ports, Dual LAN Supports 6x USB 2.0 Ports)

Note 2: (COM1~6 Default to RS232, with COM1 Optionally Supporting RS485/422, COM2 Supporting RS485)

Environment Compliance

Operating Temp.	-10°C ~ 60°C
Storage Temp.	-20°C ~ 70°C
Humidity	5% to 95%RH, Non-Condensing
Dimension	170* 170mm

Environmental performance may vary according to the integration method or final integration scenario.

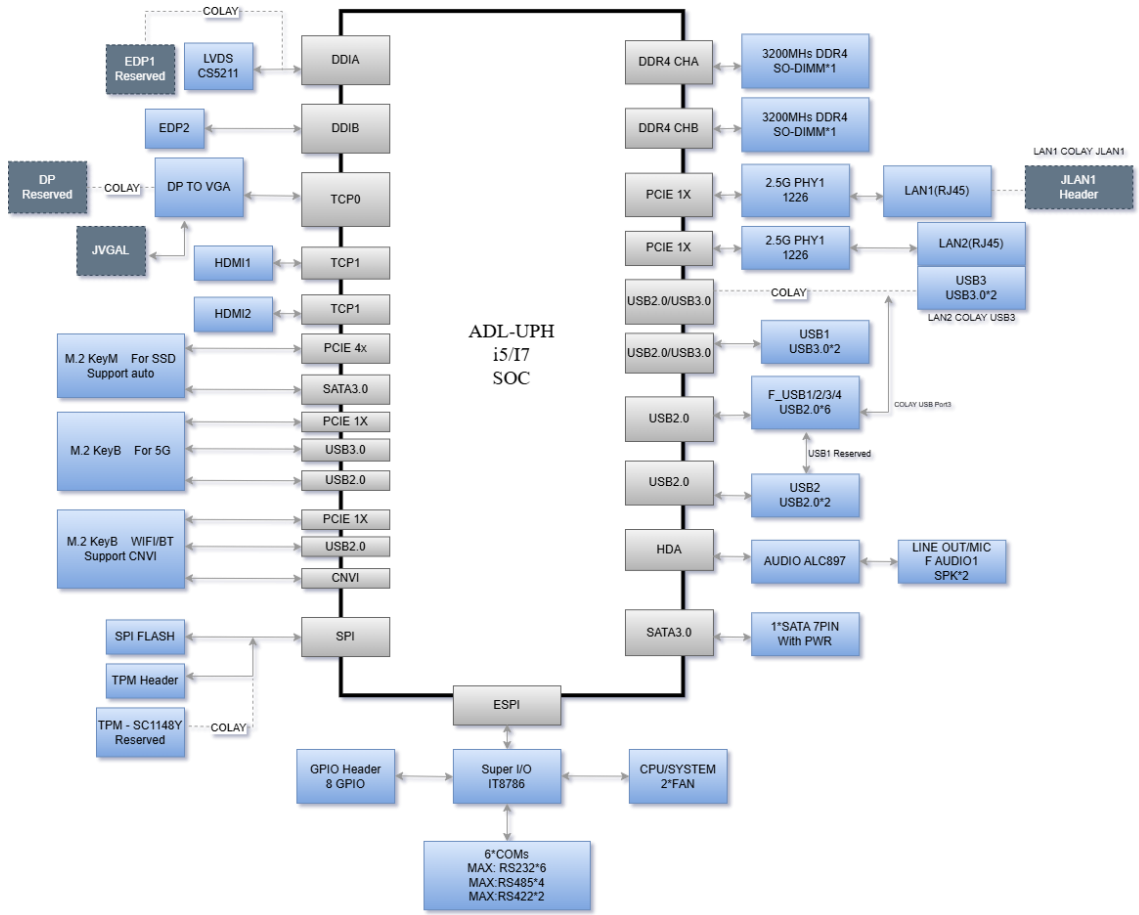
GES-BIMIT

Motherboard

Intel® Alder Lake, Raptor Lake

I5-1235U, I7-1265U, I5-1240P, I5-12450H, I5-1340P, I5-1335U

Block Diagram



Ordering Information

No.	Model	CPU	Cores	Frequency	DDR	HDMI	VGA	LVDS	EDP	LAN	USB	LPT	COM/485	POWER
1	GES-BIMIT-1235	I5-1235U	2P/8E	1.3-4.4Ghz	DDR4*2	1	1	1	1	2	8	1	6/2	19V
2	GES-BIMIT-1265	I7-1265U	2P/8E	1.8-4.8Ghz	DDR4*2	1	1	1	1	2	8	1	6/2	19V
3	GES-BIMIT-1240	I5-1240P	4P/8E	1.7-4.4Ghz	DDR4*2	1	1	1	1	2	8	1	6/2	19V
4	GES-BIMIT-12450	I5-12450H	4P/4E	2.0-4.4Ghz	DDR4*2	1	1	1	1	2	8	1	6/2	19V
5	GES-BIMIT-1340	I5-1340P	4P/8E	1.9-4.6Ghz	DDR4*2	1	1	1	1	2	8	1	6/2	19V
6	GES-BIMIT-1335	I5-1335U	2P/8E	1.3-4.6Ghz	DDR4*2	1	1	1	1	2	8	1	6/2	19V

GES-BIMIT

Motherboard

Intel® Alder Lake, Raptor Lake

I5-1235U, I7-1265U, I5-1240P, I5-12450H, I5-1340P, I5-1335U

Deliverables

1 Intel i5-1235U Mother Board

2

Ordering Details

GES-BIMIT - 1 2 3 5

CPU/SOC:

Only take the digits

Example:

I5-1235U – 1235

I7-1265U – 1265

I5-1240P – 1240

I5-12450H – 12450

I5-1340P – 1340

I5-1335U – 1335

Example: GES-BIMIT-1235

Intel i5-1235U Motherboard